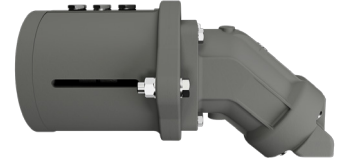


# SLP2700

## Hydraulic motor set | High pressure



A complete hydraulic motor set for SLP2700 including adaptor, coupling, and mounted on the pump. Ready to perform full vacuum and pressure.

### Metric

Motor size	cm <sup>3</sup> /rev	162	162	162	162	162	162
Oil Pressure	bar	230	210	200	195	180	0
Speed	RPM	1600	1500	1400	1300	1200	0
Oil flow	l/min	267	251	234	217	200	0
Motor Power	kW	94	81	72	65	55	0
<b>Pump power needed for vacuum and max. 0,5 barg</b>	<b>kW</b>	<b>92</b>	<b>81</b>	<b>72</b>	<b>64</b>	<b>55</b>	<b>0</b>

### Imperial

Motor size	cm <sup>3</sup> /rev	162	162	162	162	162	162
Oil Pressure	PSI	3335	3045	2900	2828	2610	0
Speed	RPM	1600	1500	1400	1300	1200	0
Oil flow	Gal/min	71	66	62	57	53	0
Motor Power	HP	126	108	96	87	74	0
<b>Pump power needed for vacuum and max. 0,5 barg</b>	<b>HP</b>	<b>123</b>	<b>109</b>	<b>96</b>	<b>86</b>	<b>74</b>	<b>0</b>